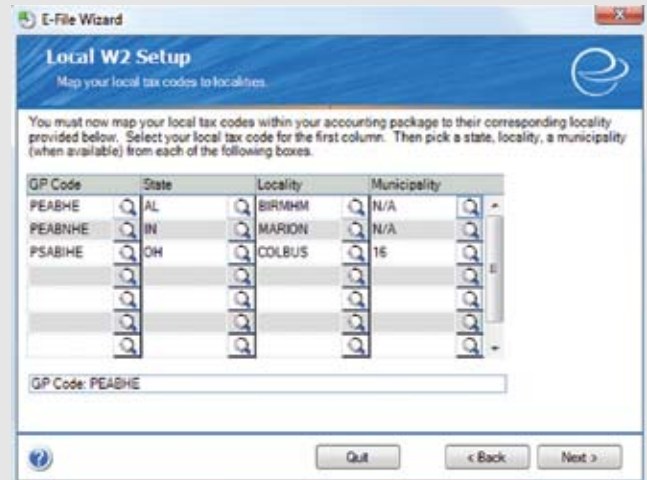


GREENSHADES LOCAL W-2

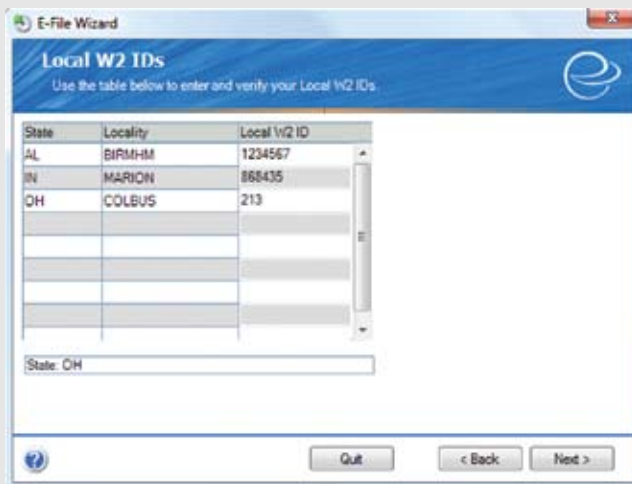
Too Many Taxes, Too Little Time

Many cities, counties and school districts require employee wages to be taxed by their employer. Reporting these local taxes is normally a complicated, manual process of determining which pieces of information each locality requires, extensively reformatting Dynamics reports and using them to fill out a proprietary tax form. Contacting a local tax office for information is often difficult and not always helpful.



Order to the Chaos

The Greenshades Local W2 module allows local withholding to be reported electronically to thousands of localities throughout the country. Through a direct integration to Dynamics GP and SL, the Local W2 module will use the local tax codes in the accounting system to determine wage and tax information. A user-friendly wizard will step through the process of creating an electronic report that is suitable to send to a given locality.



Total Local Tax Solution

Dynamics GP users may use this module in conjunction with the Greenshades Local Tax Manager to ensure that their system has the latest local tax tables and rates.